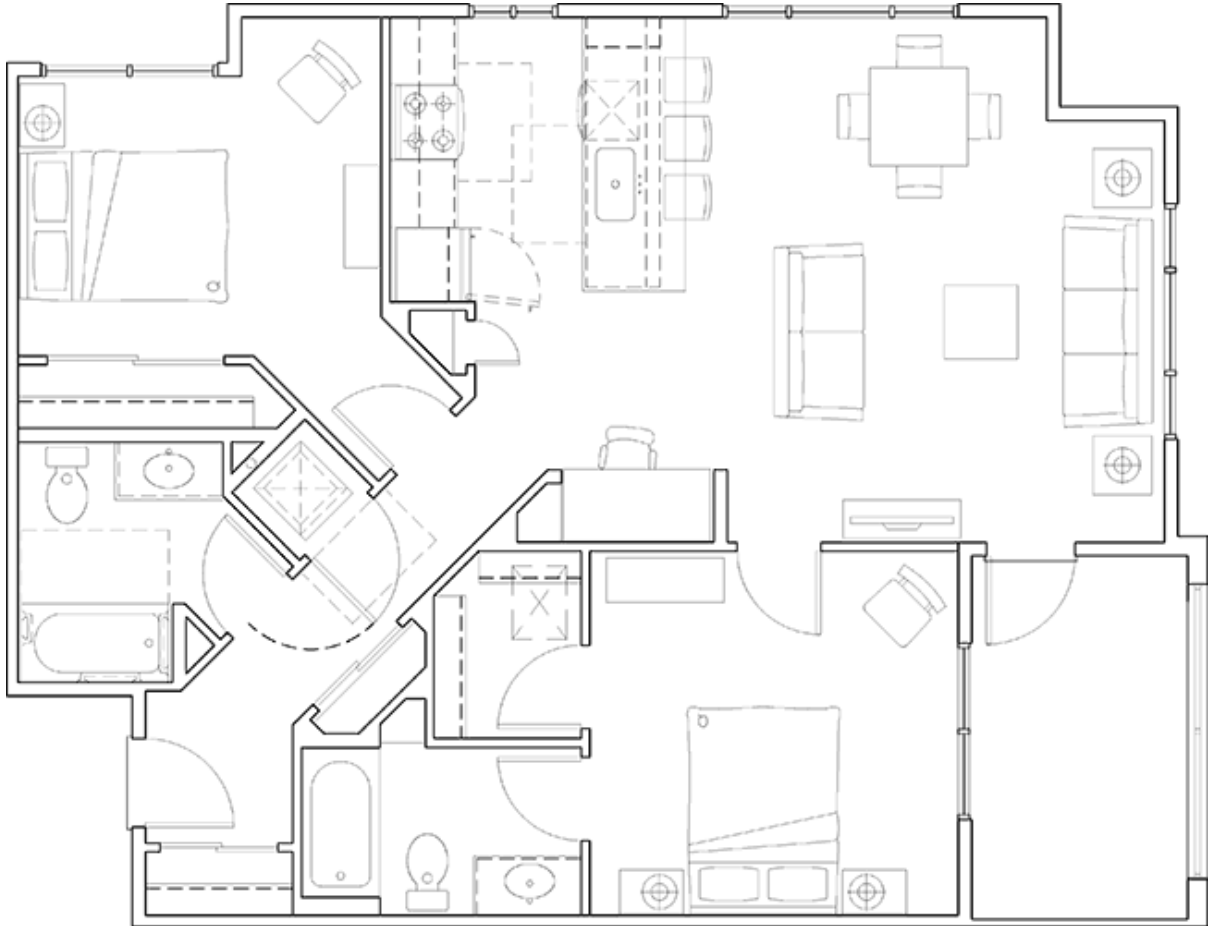


Arbor Village

MOUNTLAKE TERRACE



**2 bedroom 2 bathroom apartment
914 / 989 / 1035 square feet**

Features:

Spacious kitchen with open breakfast bar

Large master bedroom w/ walk-in closet

Open concept living-dining room

Spacious closet

Study space

Great storage

Washer-dryer in unit

All kitchen appliances including built-in microwave & dishwasher

Large windows great for natural daylight

Arbor Village Apartments

23601 56th Avenue West Mountlake Terrace, WA 98043

p: 425-967-5740 f: 425-967-3319 email: arborvillage@thrivecommunities.com